

## SHARK DISSECTION AND OBSERVATION LAB

**STEP 1:** Touch the **shark**! All members of the lab group should touch the **shark**. Pick it up, squeeze it, feel it!

List 2 words describing the texture of the **shark**: \_\_\_\_\_

Does it feel like the **shark** has hard bones similar to the bones that humans have? \_\_\_\_\_

Does the **shark**'s skeleton feel harder or softer than the bones in your arm? \_\_\_\_\_

Does the **shark**'s skelteton feel more like your rib bones or the top of your ear? \_\_\_\_\_

**STEP 2:** Measure the **shark**! Use your ruler to measure the length of the **shark**. Remember to measure in cm!

How long is your **shark**? \_\_\_\_\_

**STEP 3:** Observe the exterior of the **shark**. Pick three structures on the **shark**. Hypothesize how you think these structures help the **shark** survive.

Structure 1: \_\_\_\_\_ Hypothesis about how this structure helps help the **shark** survive better  
\_\_\_\_\_

Structure 2: \_\_\_\_\_ Hypothesis about how this structure helps the **shark** survive better:  
\_\_\_\_\_

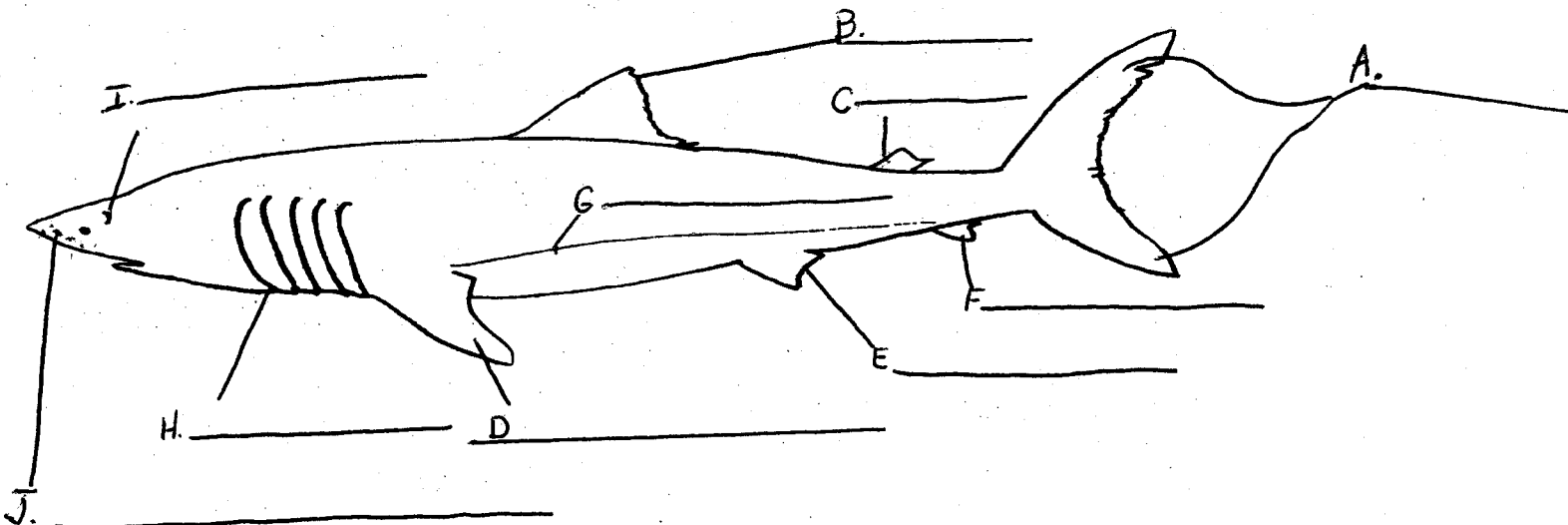
Structure 3: \_\_\_\_\_ Hypothesis about how this structure helps the **shark** survive better:  
\_\_\_\_\_

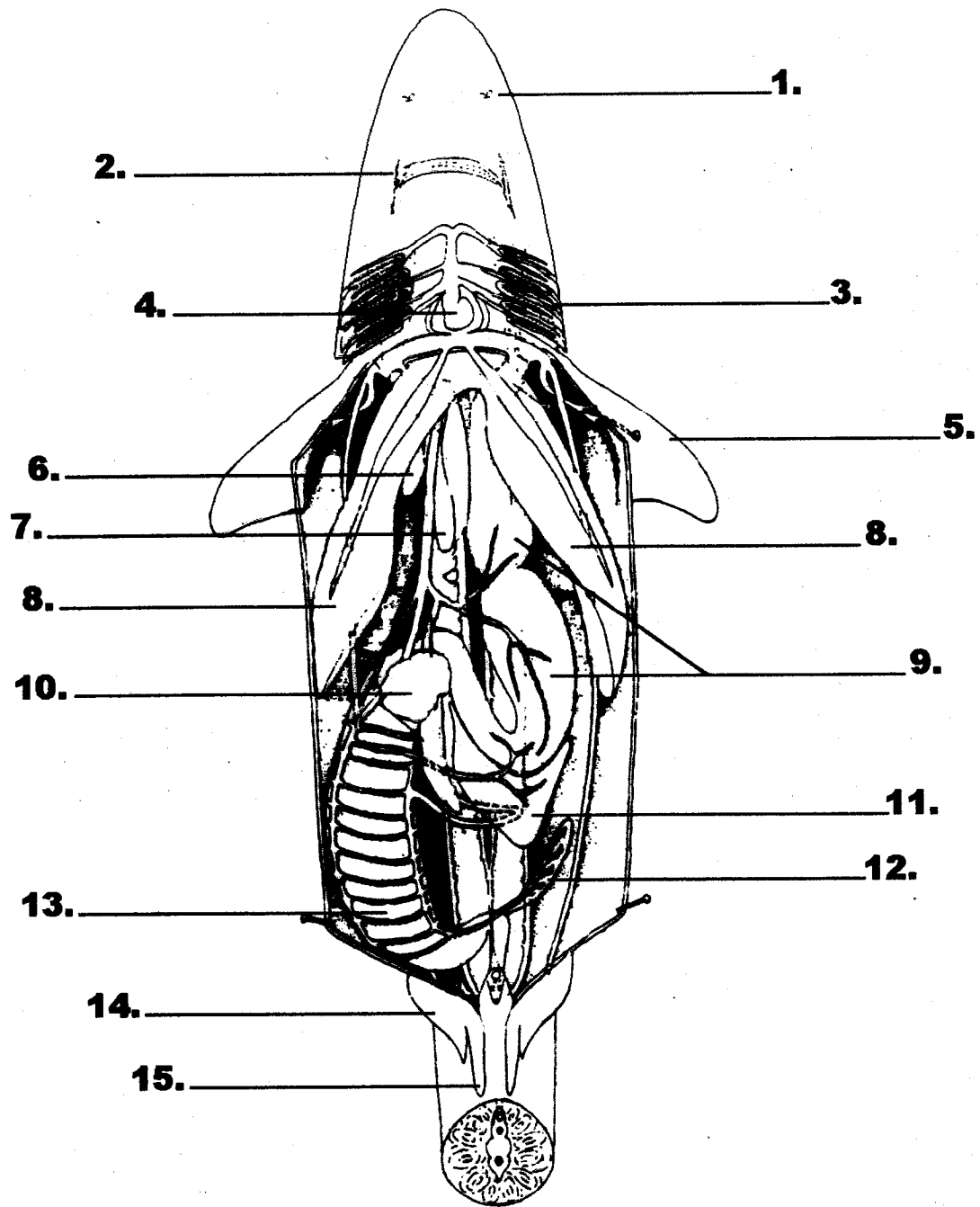
**STEP 4:** Dissect! You can now dissect the **shark**. List at least 2 observations about the **shark**'s interior (inside) below:

1. \_\_\_\_\_  
\_\_\_\_\_

2. \_\_\_\_\_  
\_\_\_\_\_

**STEP 5:** Label the missing **shark** parts on the following diagram.





Name 5 things you learned about sharks in the dissection:

- 1) \_\_\_\_\_
- 2) \_\_\_\_\_
- 3) \_\_\_\_\_
- 4) \_\_\_\_\_
- 5) \_\_\_\_\_