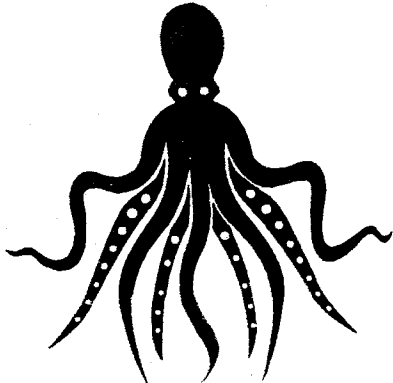
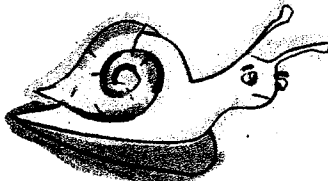
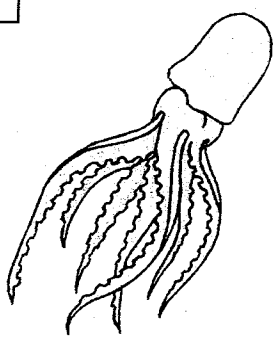
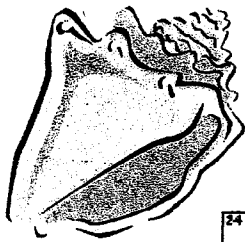
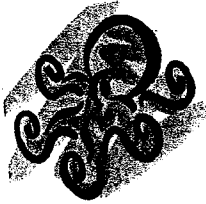
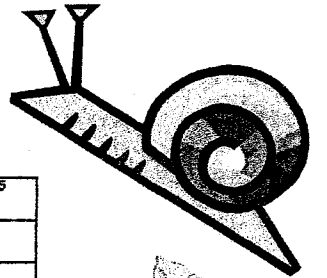
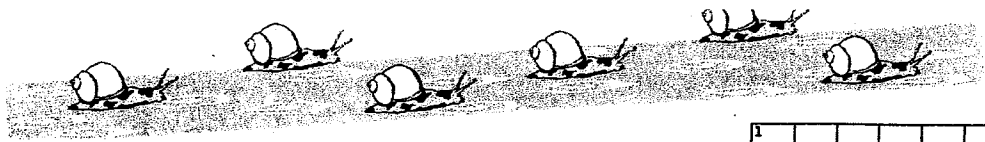


Словесный кроссворд



A crossword puzzle grid with 51 numbered starting points for words. The grid is filled with empty squares, with some black squares used as separators. The numbers are: 1 (top right), 2 (top middle), 3 (top left), 4 (top right), 5 (top right), 6 (top left), 7 (top left), 8 (top right), 9 (middle left), 10 (middle left), 11 (middle right), 12 (middle left), 13 (middle left), 14 (middle right), 15 (middle left), 16 (middle left), 17 (middle left), 18 (middle left), 19 (middle left), 20 (middle left), 21 (middle right), 22 (middle left), 23 (middle left), 24 (middle left), 25 (middle left), 26 (middle right), 27 (middle left), 28 (middle left), 29 (middle left), 30 (middle left), 31 (middle left), 32 (middle left), 33 (middle left), 34 (middle left), 35 (middle left), 36 (middle left), 37 (middle left), 38 (middle left), 39 (middle left), 40 (middle left), 41 (middle left), 42 (middle left), 43 (middle left), 44 (middle left), 45 (middle left), 46 (bottom left), 47 (bottom left), 48 (bottom left), 49 (bottom left), 50 (bottom left), 51 (bottom left).

Across

1. A cephalopod with a rippling fin running down each side.
3. The class of mollusks that contains the tusk shells.
4. A thin layer of tissue that secretes the shell.
6. This is capable of producing a large cloud of fluid.
10. White, elongated snails that tend to be predatory.
12. The most deadly cephalopod in the world.
15. A cephalopod with no remnant of a shell.
18. Cephalopods have the most well-developed _____ of any invertebrate.
20. Most mollusks are male or female but some have both. This is called _____.
23. Mary Mary Quite contrary, "how does your garden grow" with silver bells and _____.
27. Shells that are similar in color to the cowrie but have a small tip at the end and no teeth, ventrally.
28. The remnant of the squid shell
29. gastropods slide on a ventral _____.
30. The largest bivalve.
32. The common name of the mollusks with eight plates down their back!
33. Octopuses have 8 of these.
35. A large dorso-ventrally flattened snail that is popular as a food source.
39. Squid have two of these for capturing prey.
40. A molluscan "scraping tongue"
43. A snail with a volcano-shaped shell.
44. This organ takes up most of the gastropod body.
46. A packet of sperm transferred from the male to the female.
47. The class of two-shelled animals.
48. The large gastropod shells that can be played like instruments.
49. An organism that attaches to a man-made structure is said to be _____.
51. The class of mollusks that has 8 plates down the back

Down

1. An enzyme-secreting rod in the stomach.
2. The largest invertebrate in the world.
5. Bivalves are this type of feeder.
7. Beautiful, shiny shells that are kept shiny by the mantle of the snail.
8. The strings used by mussels to attach to an object.
9. A bivalve that has many eyes.
11. The phylum with the most members in the ocean.
13. The only cephalopod with a full shell.
14. A cephalopod with a small plastic-like shell remnant.
16. The class of mollusks that includes squid, octopus, cuttlefish, nautilus
17. Cephalopods have this tube that can directionally shoot water for propulsion.
19. Many sea slugs love to eat these.
21. Gastropod shells that look like unicorn horns.
22. The beautiful iridescence in the abalone that is used in jewelry-making.
24. The radula is made of a carbohydrate called _____.
25. Each arm and tentacle has many of these, used for "tasting".
26. The class of snails and slugs
31. The mollusk digestive tract is _____.
32. snails that contain poisonous harpoons.
34. Snails that have small spikes all over them.
36. The cephalopod radula is modified into a _____.
37. A bivalve that makes pearls.
38. The planktonic Larva of a snail that contains a small shell
41. The phylum with the most species in the world.
42. Because a mollusk's circulatory fluid is not in vessels, the circulatory system is said to be _____.
45. A sea slug
46. A tube formed in bivalves that brings water into the animal.
50. Clusters of nerve cells that we refer to as a primitive brain.